

TOOL WALL

Developed by machinists...for machinists



**INNOVATIVE TOOL MANAGEMENT &
STORAGE SOLUTIONS FOR CNC MACHINES**

www.TOOL-WALL.com

120 - 7198 Vantage Way . Delta . British Columbia . Canada
Phone: 604-940-0941 . Fax: 604-676-2569 . email: info@tool-wall.com

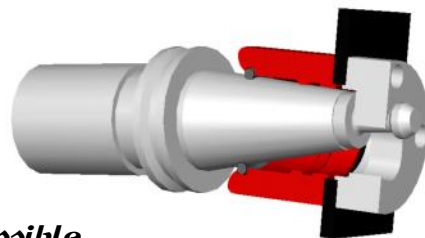
STORAGE

Don't search for your tools... See them!

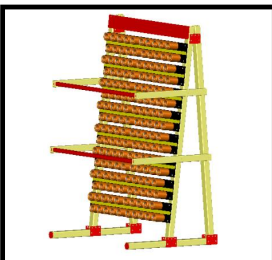
Start with a Tool Wall Storage System and **ORGANIZE** your tools

TOOL-WALL Storage System Features:

- High capacity storage.
- Innovative pull stud specific design.
- Modular storage that grows with you.
- Tiered arrangement for maximum tool visibility.
- Multiple configurations for different machine types possible
- No other tool storage system can store so many tools on such a small footprint.

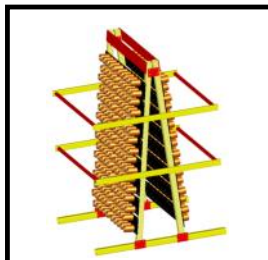


patent pending



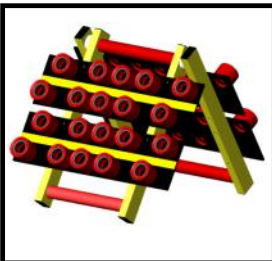
TOOL-WALL-BASIC Storage Capacity:

40 Taper:	160 Tools
HSK 63:	160 Tools
50 Taper:	60 Tools
HSK 100:	60 Tools



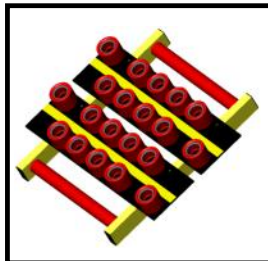
TOOL-WALL-DUAL Storage Capacity:

40 Taper:	320 Tools
HSK 63:	320 Tools
50 Taper:	120 Tools
HSK 100:	120 Tools



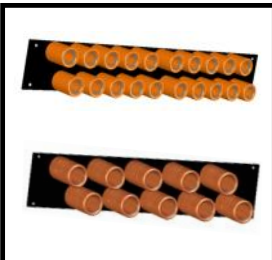
TOOL TRANSFER FRAME Storage Capacity:

40 Taper:	40 Tools
HSK 63:	40 Tools
50 Taper:	20 Tools
HSK 100:	20 Tools



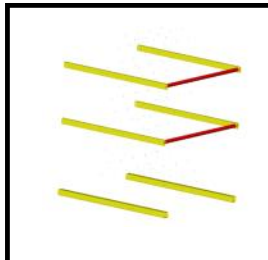
TOOL TRANSFER TRAY Storage Capacity:

40 Taper:	20 Tools
HSK 63:	20 Tools
50 Taper:	10 Tools
HSK 100:	10 Tools



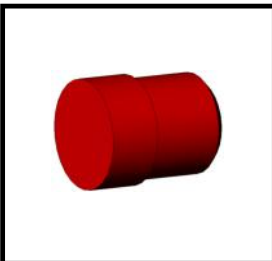
RECEPTACLE MODULE Storage Capacity:

40 Taper:	20 Tools
HSK 63:	20 Tools
50 Taper:	10 Tools
HSK 100:	10 Tools



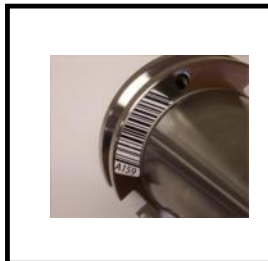
FRAME CONVERSION KIT

Convert your TOOL-WALL-BASIC to a TOOL-WALL-DUAL Frame components and bolt kit only (Receptacle Modules sold separately)



RECEPTACLE INSERT

For tools without holders. Machine the insert to fit tools that are not installed in a tool holder, then install the insert in your existing TOOL WALL receptacle.



BARCODE LABELS

Easy to read barcode labels for your 40 and 50 taper holders.

www.TOOL-WALL.com

120 - 7198 Vantage Way . Delta . British Columbia . Canada
Phone: 604-940-0941 . Fax: 604-676-2569 . email: info@tool-wall.com

SYNCHRONIZED AUTOMATION MANAGEMENT CAD/CAM/ now SAM.

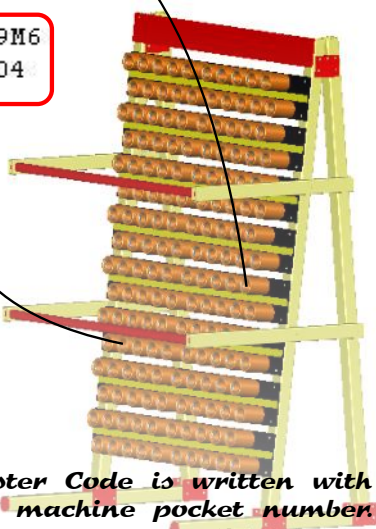
Grow into the SAM. module and **AUTOMATE** your setups.

```

X-2.625
Z-.75
G0G0Z.1M9
M5
G91G28Z0.M9
M1

( OPERATION 3: HOLES )
( TOOL 99: .41 DRILL )
( 0.410 X 2.30 HOLE CLEANING TOOL #99 )
T1704090
T99M6
T104
M1
M7
G54G90G0X-12.5Y1.125Z200M3
G43Z6.H99M8
M7
G85G99X-12.5Y1.125Z6.R6.F150.
G1F150.
X-12.Y3.75
X-10.625Y1.125
X-10.125Y3.75
X-6.75Y1.125
X-8.25Y3.75
X-6.875Y1.125
X-6.375Y3.75
X-5.Y1.125
X-8.5Y3.75
    
```

T99M6
T104



In the SAM. environment, Master Code is written with the Tool Wall number, not the machine pocket number. SAM. includes a conversion program to easily convert your existing g-code to the SAM. format.

Step 1: SAM. scans the Master Code

Tools in green are required for job and already in the machine

Tools can be automatically positioned to minimize carousel movements

Tools required for job that are in the Tool Wall.

Step 2: SAM. generates a setup file

Speed up your tool setup with the easy "Spindle Loading" option

```

(TW99 - Drill - INSERT INTO T17. OFFSET H17)
(PRESS CYCLE START)
G10 G90 L10 P17 R-8.3590
    
```

Automatically upload offsets to machine

Step 4: Making chips!

CYCLE START

SAM. rewrites g-code, replacing Master Tool number with pocket number. Easy, Fast and Simple!

Step 3: SAM. creates a working g-code file

www.TOOL-WALL.com

120 - 7198 Vantage Way . Delta . British Columbia . Canada
Phone: 604-940-0941 . Fax: 604-676-2569 . email: info@tool-wall.com